



Redevelopment of Walking Court

Medford Housing Authority
Community Meeting

November 16, 2022



Introductions



Jeffrey Driscoll
Executive Director



Margaret Moran
Deputy Executive Director of
Development



Gabriel Ciccariello
Director of Modernization &
Procurement



Joe DeLarauze
Project Manager II



Lee H. Morrissette AIA, LEED AP
Principal-in-charge



Dani Garber-Letitia AIA
Project Architect



Project Team

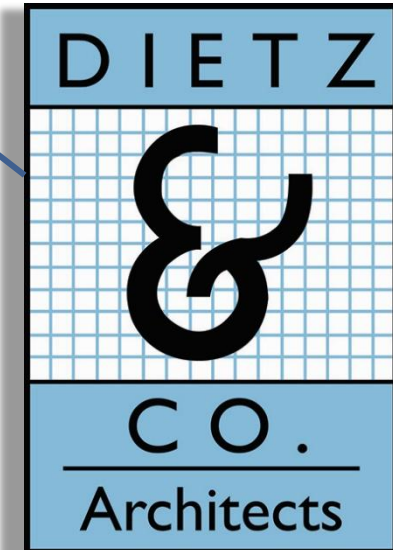


Owner, Property
Manager, and Developer



Development Consultant &
Owner's Project Manager

DIETZ & COMPANY ARCHITECTS, INC.



Designer

Agenda

- Project Design Update
 - Feasibility Option
 - Option A
 - Option B
 - Option C
- Project Schedule

Project Design Update

Walking Court Existing Conditions

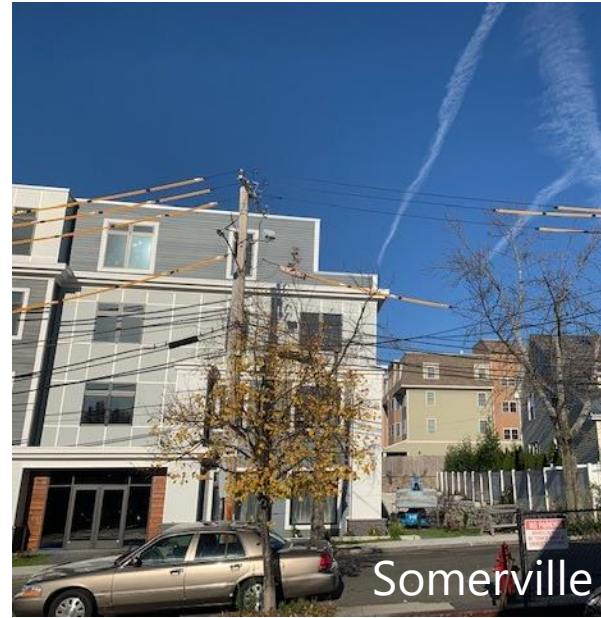


Walking Court

Existing Neighborhood Scale

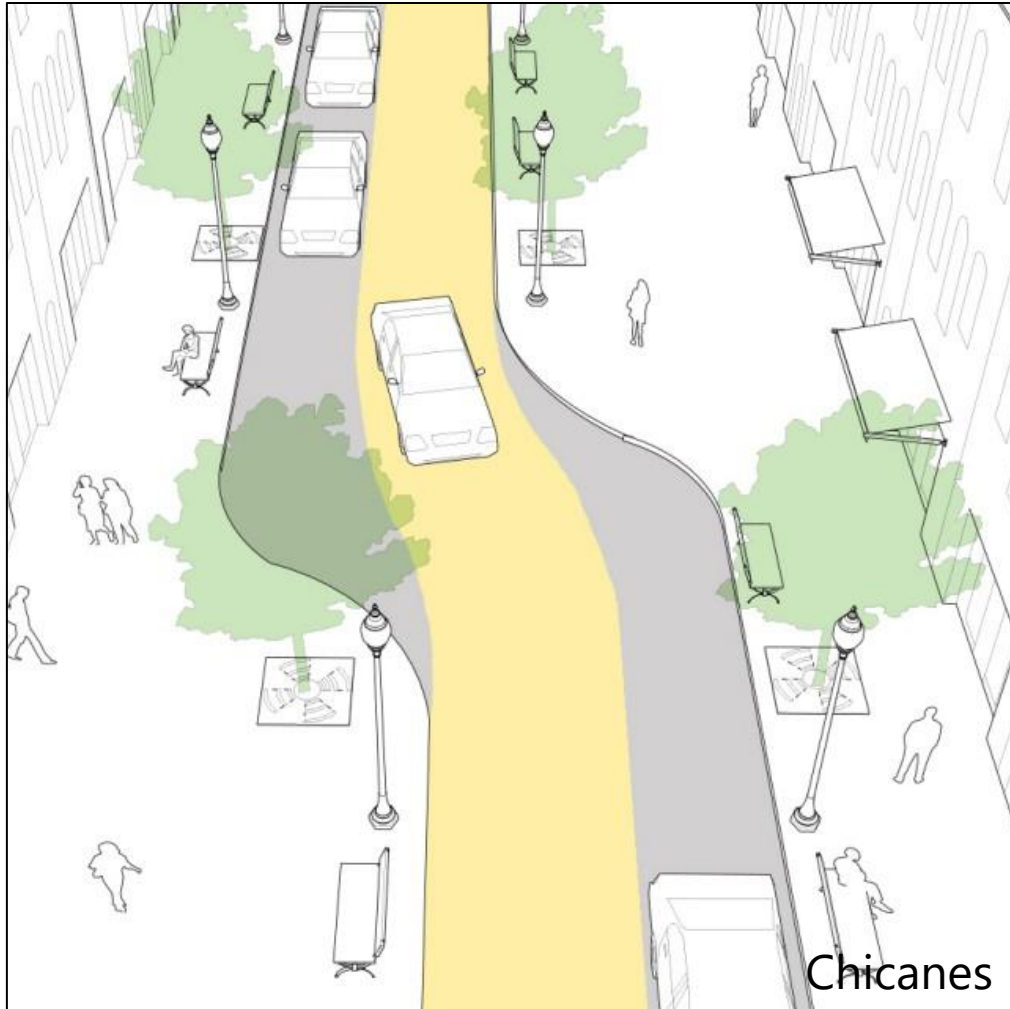


Walking Court Case Studies



Walking Court

Traffic Calming Measures



Walking Court Existing Conditions



Walking Court Feasibility Study

Senior Apartments

Units: 198

Stories: 5-6

Parking: 119 (88 below, 31 open)

Family Apartments

Units: 24

Stories: 4

Parking: 36 (26 below, 10 open)

Family Townhouses

Units: 16

Stories: 2

Parking: 24 open

Totals

Units: 238

Parking: 179



Walking Court Option A

Senior Apartments

Units: 188-1B, 10-2B
Stories: 5-6
Parking: 40 (below), 50 (open)

Family Apartments

Units: 6-1B, 15-2B, 3-3B
Stories: 4
Parking: 30 (below)

Family Townhouses

Units: 12-2B, 4-3B
Stories: 2
Parking: 38 (open)

Totals

Units: 238
Parking: 158



Walking Court Option B

Senior Apartments

Units: 188-1B, 10-2B
Stories: 5-6
Parking: 82 (below), 18 (open)

Family Apartments

Units: 6-1B, 15-2B, 3-3B
Stories: 4
Parking: 30 (below)

Family Townhouses

Units: 12-2B, 4-3B
Stories: 2
Parking: 32 (open)

Totals

Units: 238
Parking: 162



Walking Court Option C

Senior Apartments

Units: 188-1B, 10-2B
Stories: 5-6
Parking: 82 (below), 18 (open)

Family Apartments

Units: 6-1B, 15-2B, 3-3B
Stories: 4
Parking: 30 (below)

Family Townhouses

Units: 12-2B, 4-3B
Stories: 2
Parking: 22 (open)

Totals

Units: 238
Parking: 152

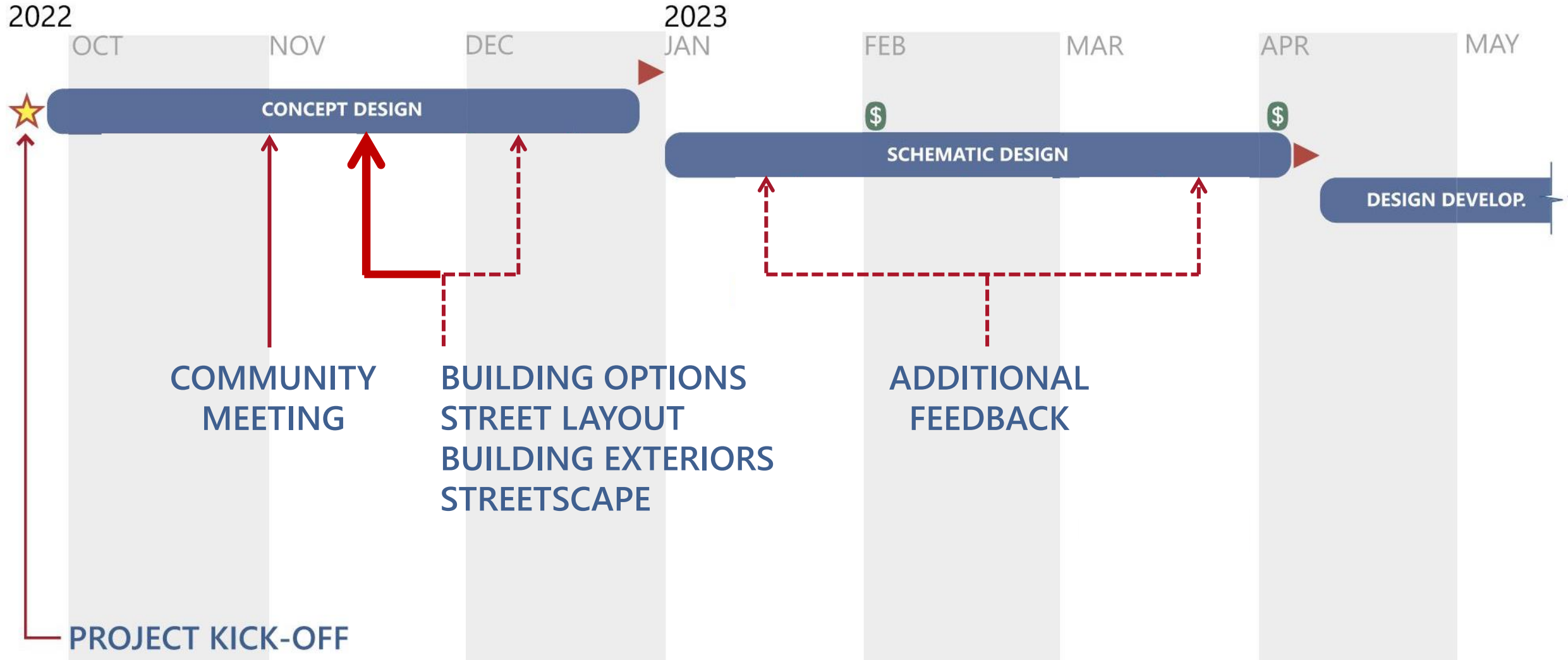


Walking Court Overlay for Trees and Buildings



Project Schedule

Project Schedule Next 6 Months





Thank you.

Questions?

